



# Aquila Electronics Limited Product Catalogue

This document contains a guide to the products and accessories available from Aquila Electronics Limited. For full details and pricing, please contact us directly. Products are subject to availability and specifications are subject to change.

## Taximeter Products

— Main Aquila Products



**N00377**  
T2 Mk II Taximeter  
(Provincial)

T2 Mk II Taximeter for use in the UK (English, Pounds Sterling currency markings), outside London.



**N00378**  
T2D Mk II Taximeter

T2D Mk II Taximeter for use in the UK (English, Pounds Sterling currency markings), outside London.



**N00403**  
T-Tiny+ Taximeter

T-Tiny+ Taximeter for use in the UK (English, Pounds Sterling currency markings)



**N00301**  
Thermal Receipt Printer

Thermal printer for use with the T2 Taximeter and special wiring harness.



**N00447**  
Mini Receipt Printer

Light and compact Receipt Printer for the T2 and T-Tiny taximeters. Special looms required.



**N00408**  
Taximeter Remote Control

Infra-red remote control for use with the T-Tiny taximeter



# Aquila Electronics Limited Product Catalogue

This document contains a guide to the products and accessories available from Aquila Electronics Limited. For full details and pricing, please contact us directly. Products are subject to availability and specifications are subject to change.

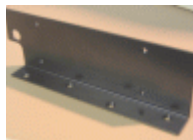
## Accessories

— Brackets and wiring harnesses to install Aquila taximeters.



**N00436**  
T2 Dash Mounting  
Bracket - Reversible version

'L' shaped bracket for fixing a T2 or T2D to a horizontal surface. Also requires use of standard bracket.



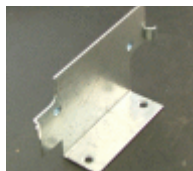
**N00286**  
T2 Dash Mounting Bracket

'L' shaped bracket for fixing a T2 or T2D to a horizontal surface. Also requires use of standard bracket.



**N00309**  
Plastic Taximeter Mounting  
Bracket

Mounting bracket for use where meter to vehicle sealing is not required. Simple clip-in fixing.



**N00347**  
T-Tiny dash mounting  
bracket

Bracket for fitting T-Tiny to a dash or roof



**N00421**  
T-Tiny dash mounting  
bracket (Vent Type)

Bracket for fitting T-Tiny using a vent fixing



**N00255**  
T2 Bracket

Standard bracket for T2 and T2D taximeters. Allows use of meter to vehicle seals.



# Aquila Electronics Limited Product Catalogue

This document contains a guide to the products and accessories available from Aquila Electronics Limited. For full details and pricing, please contact us directly. Products are subject to availability and specifications are subject to change.



**N00244**  
Vent Mounting Bracket for  
Taximeter

Simple accessory allows meter to be fitted to heating vents on some vehicles.



**N00424**  
Vent Mounting Bracket  
(Short Type)

Small version of the vent bracket for use with the T-Tiny



**N00320**  
T2 TXI Bracket

Bracket for fitting T2 and T2D into a London Taxis TXI or TXII vehicle. Also requires N00255.



**N00398**  
T-Tiny Interface Unit

Interface unit for the T-Tiny. Expands the T-Tiny's lamp outputs to 4 high current outputs and provides a connection for a printer.



**N00278**  
T2 Taximeter Saloon  
Harness

Standard wiring harness for general purpose installations of T2 and T2D taximeters. Cable length: 2 metres. The harness has connections for power (0v and 12v), speed pulse input and two lamp drive outputs. Version with single wires with overall sleeving.



**N00431**  
T2 Taximeter Saloon  
Harness - Multicore cable  
type

Wiring harness (based on multicore cable) for general purpose installations of T2 and T2D taximeters. Cable length: 2 metres. The harness has connections for power (0v and 12v), speed pulse input and two lamp drive outputs.



**N00413**  
T-Tiny Taximeter Interface  
Harness

Special harness for installing the T-Tiny into a vehicle with an interface unit



# Aquila Electronics Limited Product Catalogue

This document contains a guide to the products and accessories available from Aquila Electronics Limited. For full details and pricing, please contact us directly. Products are subject to availability and specifications are subject to change.



**N00319**  
T2 Saloon Harness with  
Printer (2.5m)

Wiring harness for installing a T2 and Thermal Receipt Printer. Taximeter cable length: 2 metres; Printer cable length: 2.5 metres.



**N00444**  
Serial Cable - Mini Receipt  
Printer

Cable for adapting a standard Aquila loom to work with the Mini Printer



**N00445**  
Power Cable - Mini Receipt  
Printer

Power supply cable for the Mini Printer



**N00341**  
1.8m printer extension cable

Extends distance of printer from the meter by 1.8m. Also used to connect a printer to the T-Tiny interface module, N00398.



**N00298**  
T2/TX1 Adaptor Harness

Adaptor for connecting a T2 to a London Taxis TXI or TXII vehicle.



**N00321**  
T2/Printer/TXI Installation  
Harness

Wiring kit for installing a T2 with printer into a TX1 or TX2 taxi.



**N00322**  
450mm Printer Adaptor  
Lead for T2

Pre-assembled RJ11 cable for adapting standard T2 harnesses for use with printer.



# Aquila Electronics Limited Product Catalogue

This document contains a guide to the products and accessories available from Aquila Electronics Limited. For full details and pricing, please contact us directly. Products are subject to availability and specifications are subject to change.



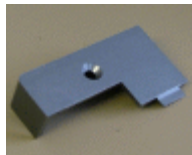
**N00323**  
Printer Mounting Plate

Mounting Plate for Thermal Printer. Fixes to printer with M3 screws.



**N00290**  
T2 Mk I Wiring Cover  
Spares Kit (Pack 10)

Replacement part for T2 and T2D Mk I taximeters' rear wiring cover.



**N00386**  
T2 Mk II Wiring Cover  
Spares Kit (Pack 10)

Replacement part for T2 and T2D Mk I taximeters' rear wiring cover.



**N00327**  
Box of 20 Printer Paper  
Rolls

20 rolls of thermal paper for our Receipt Printer N00301.



**N00279**  
T2 Tariff Transfer Card

Service charge for supply of blank Aquila Tariff Transfer Card.



# Aquila Electronics Limited Product Catalogue

This document contains a guide to the products and accessories available from Aquila Electronics Limited. For full details and pricing, please contact us directly. Products are subject to availability and specifications are subject to change.

## Seal Components

— Accessories for sealing Aquila Taximeters



**N00253**  
T2 Mk I Tariff Seal Retainer

Seal retainer which covers the tariff connector. Replacement as supplied with the T2 and T2D Mk I.



**N00287**  
T2 Tariff Seal Retainer  
(With Hole)

Seal retainer which covers the tariff connector. This version has a hole allowing a tariff identifier to be inserted. Replacement for part which is normally supplied with the T2 and T2D.



**N00350**  
T2 MkII Tariff Seal Retainer  
(Without Hole)

Seal retainer which covers the tariff connector. Replacement as supplied with the T2 and T2D Mk II



**N00277**  
T2 Lead Seal Adaptor

Adaptor to allow the use of disc style seals on the T2 and T2D.



**N00282**  
Seal Screw (Plastic,  
23.5mm)

Screw for fixing Aquila taximeters to their standard bracket. May be sealed with PCO style plastic seals.



**N00166**  
Seal Screw (Plastic, 8mm)

Screw for fixing tariff seal retainers to the T2 and T2D. May be sealed with PCO style plastic seals.



# **Aquila Electronics Limited**

## **Product Catalogue**

This document contains a guide to the products and accessories available from Aquila Electronics Limited. For full details and pricing, please contact us directly. Products are subject to availability and specifications are subject to change.



**N00232**  
M4x20 Posi Machine Screw

Screw for use with lead disc seals and seal adaptors.



**N00222**  
Aquila Plastic Seal - HCO  
(White)

White PCO Style plastic seal carrying "Aquila HCO" lettering. Supplied only to, or with the authorisation of, local authorities for the purpose of sealing tested meters. Supplied in bags of 100.



**N00221**  
Aquila Taximeter Seal  
(Grey)

Grey PCO Style plastic seal carrying "Aquila" lettering. Supplied only to Aquila dealers. Supplied in bags of 100.